

Goat Anti-SERPINF1 / PEDF Antibody (internal region)
Purified Goat Polyclonal Antibody
Catalog # AF4180a**Specification**

Goat Anti-SERPINF1 / PEDF Antibody (internal region) - Product Information

Application	WB, E
Primary Accession	P36955
Other Accession	NP_002606.3
Reactivity	Human
Predicted	Human, Pig, Dog
Host	Goat
Clonality	Polyclonal
Concentration	0.5
Calculated MW	46312

Goat Anti-SERPINF1 / PEDF Antibody (internal region) - Additional Information**Gene ID** 5176**Other Names**

SERPINF1; EPC-1; PEDF; PIG35; serpin peptidase inhibitor, clade F (alpha-2 antiplasmin, pigment epithelium derived factor), member 1; pigment epithelium-derived factor; proliferation-inducing protein 35; serine (or cysteine) proteinase inhibitor, clade F (alpha-2 antiplasmin, pigment epithelium derived factor), member 1

Dilution

WB~~1:1000

E~~N/A

Format

Supplied at 0.5 mg/ml in Tris saline, 0.02% sodium azide, pH7.3 with 0.5% bovine serum albumin. Aliquot and store at -20°C. Minimize freezing and thawing.

Immunogen

Peptide with sequence C-KITGKPIKLTQVEHR, from the internal region of the protein sequence according to NP_002606.3.

Storage

Maintain refrigerated at 2-8°C for up to 6 months. For long term storage store at -20°C in small aliquots to prevent freeze-thaw cycles.

Precautions

Goat Anti-SERPINF1 / PEDF Antibody (internal region) is for research use only and not for use in diagnostic or therapeutic procedures.

Goat Anti-SERPINF1 / PEDF Antibody (internal region) - Protein Information

Name SERPINF1

Synonyms PEDF

Function

Neurotrophic protein; induces extensive neuronal differentiation in retinoblastoma cells. Potent inhibitor of angiogenesis. As it does not undergo the S (stressed) to R (relaxed) conformational transition characteristic of active serpins, it exhibits no serine protease inhibitory activity.

Cellular Location

Secreted. Melanosome. Note=Enriched in stage I melanosomes

Tissue Location

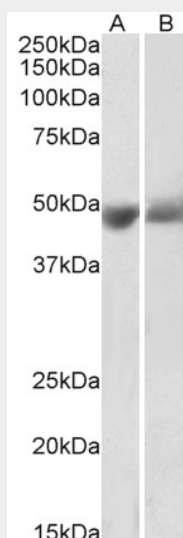
Retinal pigment epithelial cells and blood plasma.

Goat Anti-SERPINF1 / PEDF Antibody (internal region) - Protocols

Provided below are standard protocols that you may find useful for product applications.

- [Western Blot](#)
- [Blocking Peptides](#)
- [Dot Blot](#)
- [Immunohistochemistry](#)
- [Immunofluorescence](#)
- [Immunoprecipitation](#)
- [Flow Cytometry](#)
- [Cell Culture](#)

Goat Anti-SERPINF1 / PEDF Antibody (internal region) - Images



AF4180a (0.3 µg/ml) staining of Human Albumin-depleted Plasma (A) and Serum (B) lysates (35 µg protein in RIPA buffer). Primary incubation was 1 hour. Detected by chemiluminescence.

Goat Anti-SERPINF1 / PEDF Antibody (internal region) - References

pposing effects of pigment epithelium-derived factor on breast cancer cell versus neuronal survival: implication for brain metastasis and metastasis-induced brain damage. Fitzgerald DP et al.

Cancer Res. 2012 Jan 1;72(1):144-53.